



These stainless steel pumps feature a unique one piece volute casing that is produced using an advanced computer controlled Plasma stamping system that ensures total quality control during manufacture. With the smooth surfaces of stamped stainless steel, this results in consistent high standard products, of superior quality and high efficiency.

The back pull-out construction permits the disassembly and overhaul of the impeller, mechanical seal and motor without removal of the suction or discharge piping, or pump casing.

The centre line discharge and foot support under the casing ensure maximum resistance to misalignment and distortion from pipe loads.

All the hydraulic and wetted components are manufactured in 304 Stainless Steel



Economical extended motor shaft design.

Specifications

- Stainless steel pump with closed impeller
- Maximum working pressure : 10 bar
- Liquid temperature: -10°C to +90°C (standard construction)

Materials

- Pump casing: 304 Stainless Steel
- Impeller: 304 Stainless Steel
- Casing cover: 304 Stainless Steel
- Shaft : 304 Stainless Steel (wetted part)
- Motor bracket: Cast Iron
- Mech. seal: Carbon/Ceramic/NBR (standard construction)

Motor Data

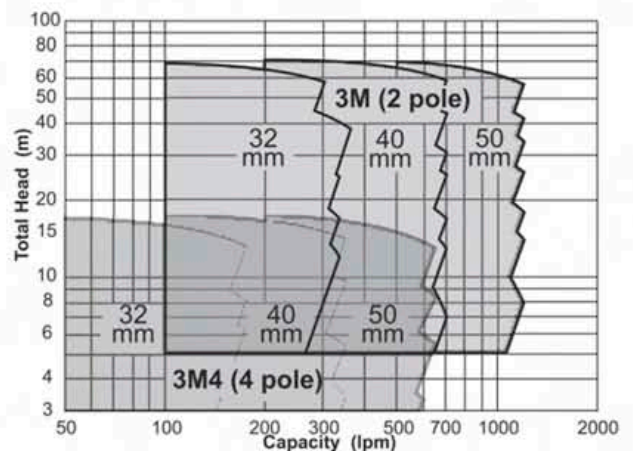
- Extended shaft motors, aluminium frame
- 3 phase, TEFC, IP55, Class F
- 400/690V (5.5 kW & above) 230/400 V(up to 4.0 kW)

Range

- 32mm Ø to 50mm Ø discharge
- 1.1 to 15 kW - 3 phase (2 pole models)
- 0.37 to 2.2 kW - 3 phase (4 pole models)

Options/Accessories

- Car/Cer/Viton or SiC/SiC/Viton mechanical seals (max. temperature 110°C with optional seals)
- Carbon steel or 304 stainless steel companion flange kits.

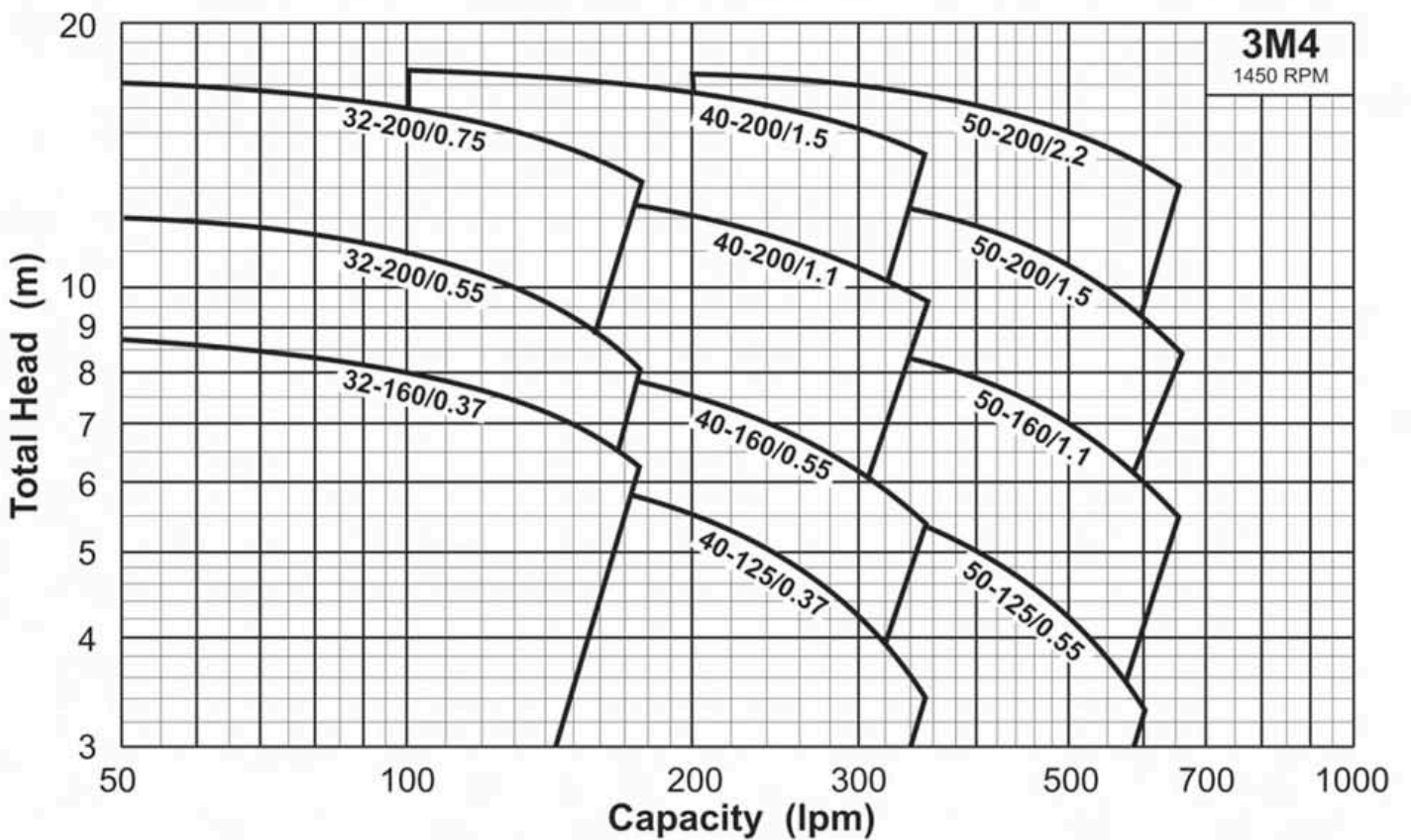
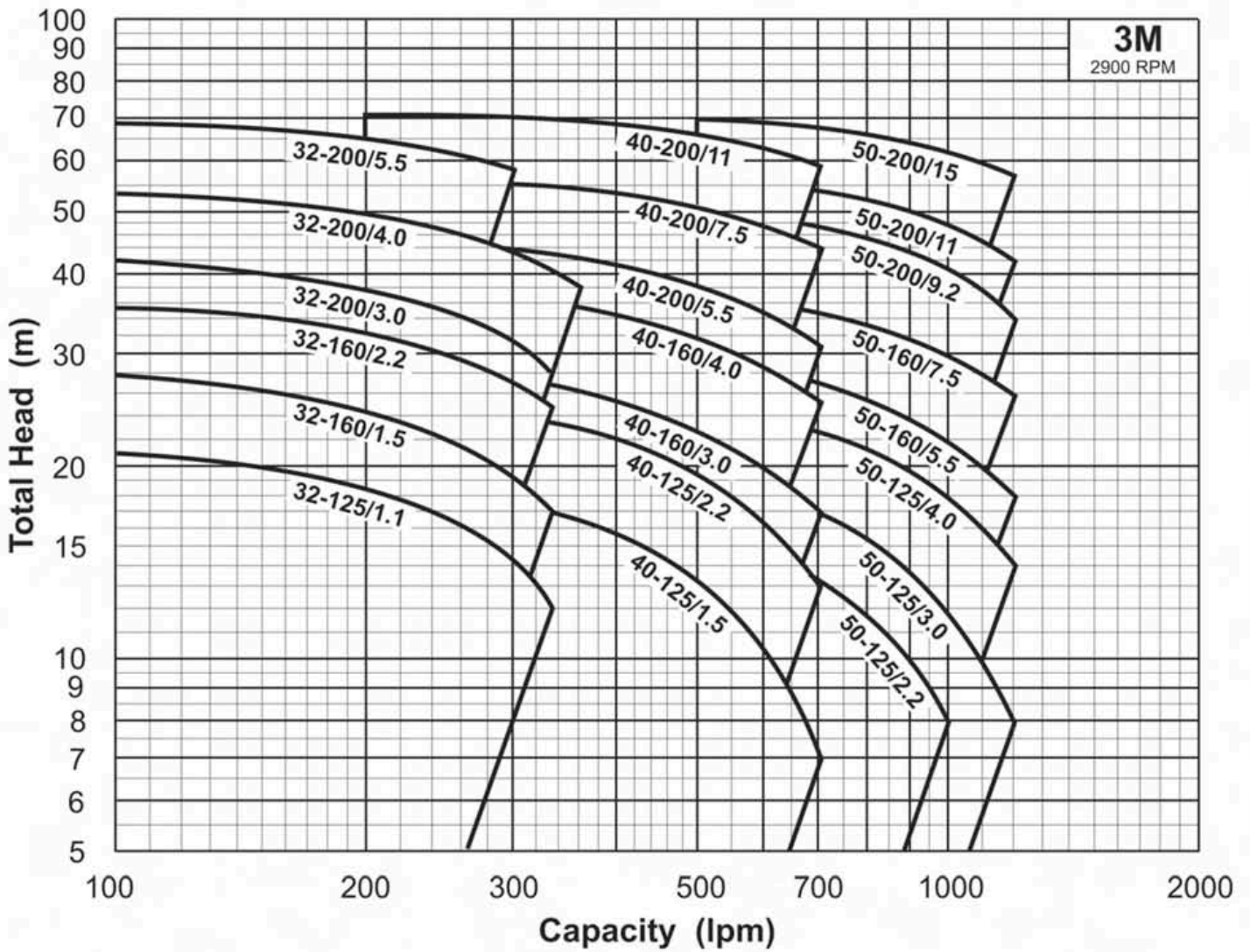


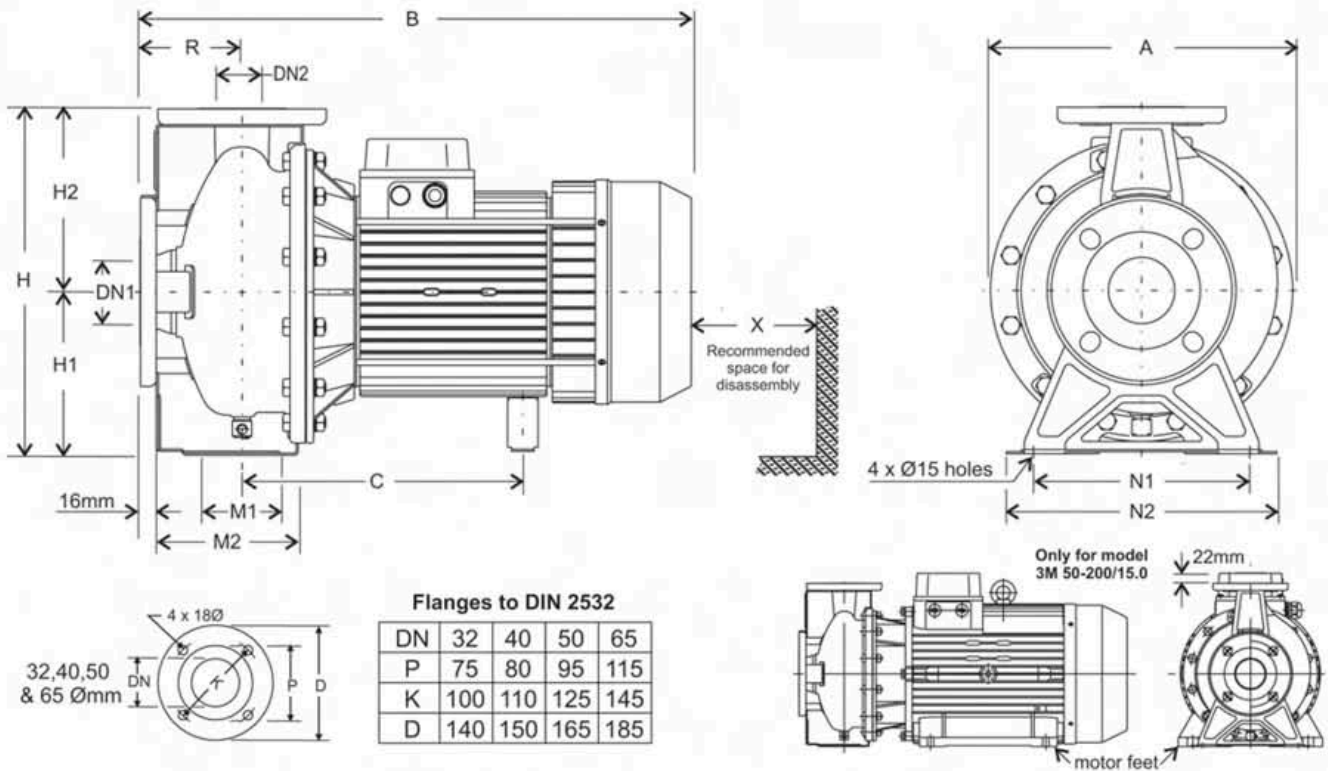
Model Code

3M 40 - 200 / 7.5

- 3M = 2 pole model, 3M4 = 4 pole model
- 40 = Nominal Impeller Diameter mm
- 200 = Discharge Size Ømm
- 7.5 = Motor Size kW

- 2 Pole & 4 pole versions
- Over 30 models
- 32mm to 50 mm discharge size
- 0.37 to 15 kW motor power
- Flows to 1200 lpm
- Heads to 70m





Flanges to DIN 2532

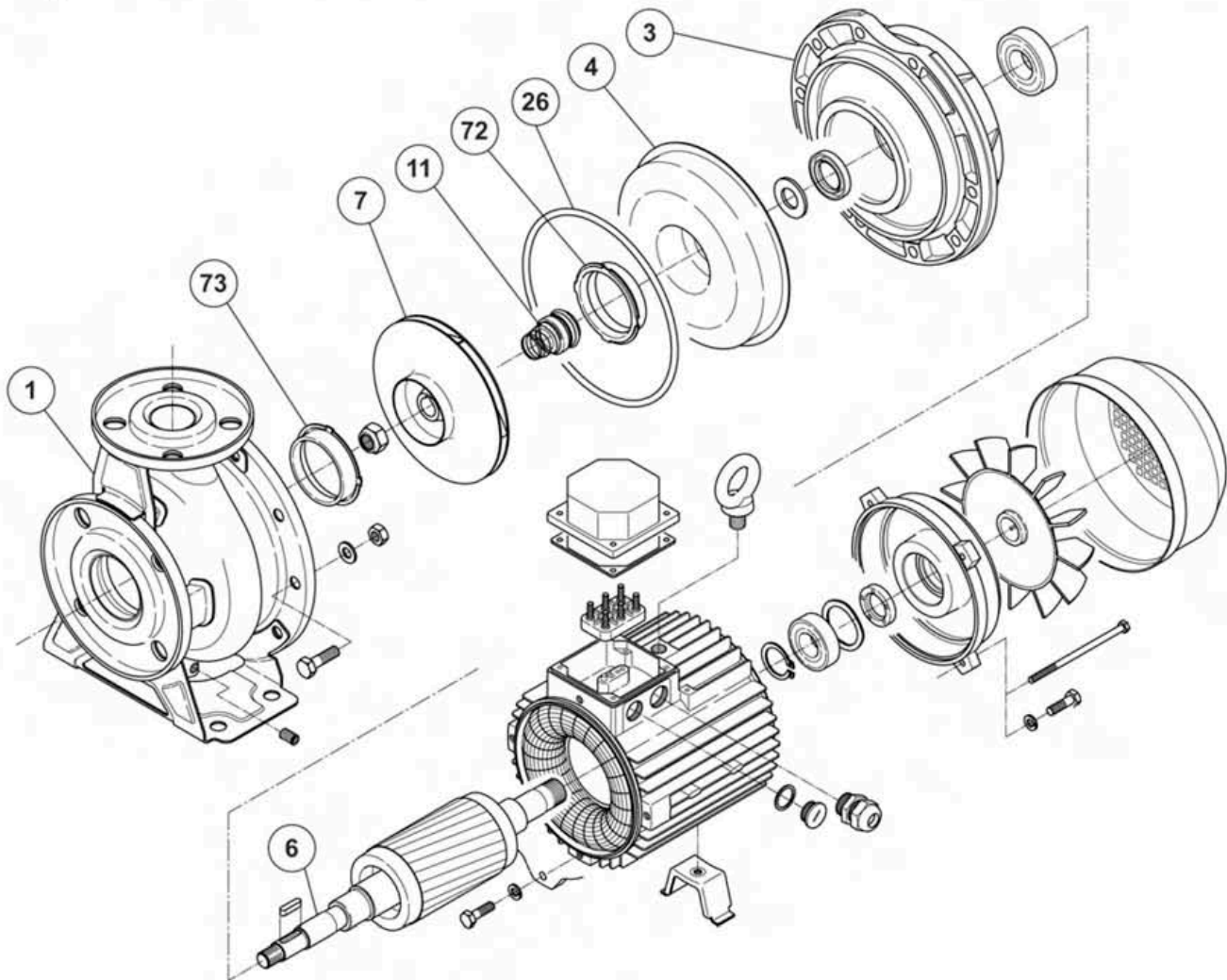
DN	32	40	50	65
P	75	80	95	115
K	100	110	125	145
D	140	150	165	185

DN2 x DN1	2 Pole Pump Model	Dimensions (mm)											Weight (kg)	
		A	B	C	R	H1	H2	H	M1	M2	N1	N2		X
32 mm x 50 mm	3M 32-125/1.1	213	408	231	80	112	140	252	70	114	140	190	110	24
	3M 32-160/1.5	254	408	231	80	132	160	292	70	118	190	240	110	24
	3M 32-160/2.2	254	408	231	80	132	160	292	70	118	190	240	110	26
	3M 32-200/3.0	296	433	256	80	160	180	340	70	119	190	240	110	32
	3M 32-200/4.0	296	458	256	80	160	180	340	70	119	190	240	110	34
	3M 32-200/5.5	296	477	276	80	160	180	340	70	119	190	240	110	46
40 mm x 65 mm	3M 40-125/1.5	213	408	231	80	112	140	252	70	114	160	210	115	28
	3M 40-125/2.2	213	408	231	80	112	140	252	70	114	160	210	115	31
	3M 40-160/3.0	254	433	255	80	132	160	292	70	118	190	240	115	36
	3M 40-160/4.0	254	458	255	80	132	160	292	70	118	190	240	115	38
	3M 40-200/5.5	296	497	278	100	160	180	340	70	115	212	265	115	51
	3M 40-200/7.5	296	520	224	100	160	180	340	70	115	212	265	115	53
	3M 40-200/11.0	296	577	224	100	160	180	340	70	115	212	265	115	66
50 mm x 65 mm	3M 50-125/2.2	254	428	231	100	132	160	292	70	114	190	240	125	32
	3M 50-125/3.0	254	453	255	100	132	160	292	70	114	190	240	125	35
	3M 50-125/4.0	254	478	255	100	132	160	292	70	114	190	240	125	40
	3M 50-160/5.5	296	497	278	100	160	180	340	70	115	212	265	125	55
	3M 50-160/7.5	296	520	224	100	160	180	340	70	115	212	265	125	61
	3M 50-200/9.2	296	582	239	100	160	200	360	70	115	212	265	125	67
	3M 50-200/11.0	296	582	239	100	160	200	360	70	115	212	265	125	70
	3M 50-200/15.0	314	724	N/A	100	160	200	360	70	115	212	265	125	110

DN2 x DN1	4 Pole Pump Model	Dimensions (mm)											Weight (kg)	
		A	B	C	R	H1	H2	H	M1	M2	N1	N2		X
32 mm x 50 mm	3M4 32-160/0.37	254	395	219	80	132	160	292	70	118	190	240	110	20
	3M4 32-200/0.55	296	395	219	80	160	180	340	70	119	190	240	110	25
	3M4 32-200/0.75	296	408	230	80	160	180	340	70	119	190	240	110	28
40 mm x 65 mm	3M4 40-125/0.37	213	371	205	80	112	140	252	70	114	160	210	115	16
	3M4 40-160/0.55	254	395	219	80	132	160	292	70	118	190	240	115	21
	3M4 40-200/1.1	296	428	230	100	160	180	340	70	115	212	265	115	29
	3M4 40-200/1.5	296	428	230	100	160	180	340	70	115	212	265	115	31
50 mm x 65 mm	3M4 50-125/0.55	254	415	219	100	132	160	292	70	114	190	240	125	21
	3M4 50-160/1.1	296	428	230	100	160	180	340	70	115	212	265	125	26
	3M4 50-200/1.5	296	428	230	100	160	200	360	70	115	212	265	125	32
	3M4 50-200/2.2	296	474	253	100	160	200	360	70	115	212	265	125	36

Specifications subject to change without notice

Typical construction



Item	Description	Suits models	Materials
1	Casing	All 32, 40 & 50 models	AISI 304 Stainless Steel - <i>stamped</i>
3	Motor Bracket	All models	Cast Iron
4	Casing Cover	All 32, 40 & 50 models	AISI 304 Stainless Steel - <i>stamped</i>
6	Shaft (& rotor)	All models <small>(Material refers to part in contact with liquid)</small>	AISI 304 Stainless Steel
7	Impeller	All 32, 40 & 50 models	AISI 304 Stainless Steel - <i>stamped</i>
11	Mechanical Seal	All models	Carbon/Ceramic/Viton <small>Carbon/Ceramic/Viton - High Temp. Option SiC/SiC/Viton - Hard Face Option</small>
26	O-ring (casing)	All models	NBR <small>Viton - when optional seals fitted</small>
72	Casing Ring (rear)	32-200, 40-200, 50-125, 160, 200	AISI 304 Stainless Steel - <i>stamped</i>
73	Casing Ring (front)	All models	AISI 304 Stainless Steel - <i>stamped</i>

Casing



Stamped

Impeller



Stamped

Casing Cover



Stamped

Specifications subject to change without notice