



Japanese Technology since 1912

Introducing Shurricane

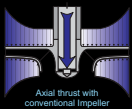


In Ebara's new EVMS vertical multistage pumps

Cutting edge technology



Unique impeller design greatly reduces thrust



Axial thrust with conventional impeller

Japanese technology

Made in Italy



Any motor - Anywhere

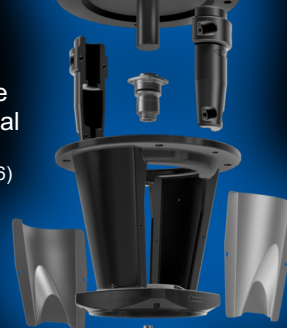
IEC standard motors

Cartridge mechanical seals (to EN12756)

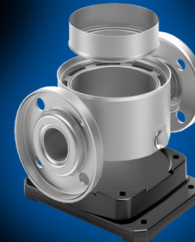
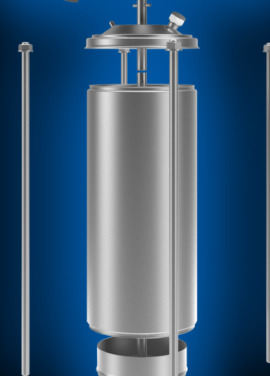
Unique hydraulic design



Spacer coupling (5.5 kW & above)



Optional materials



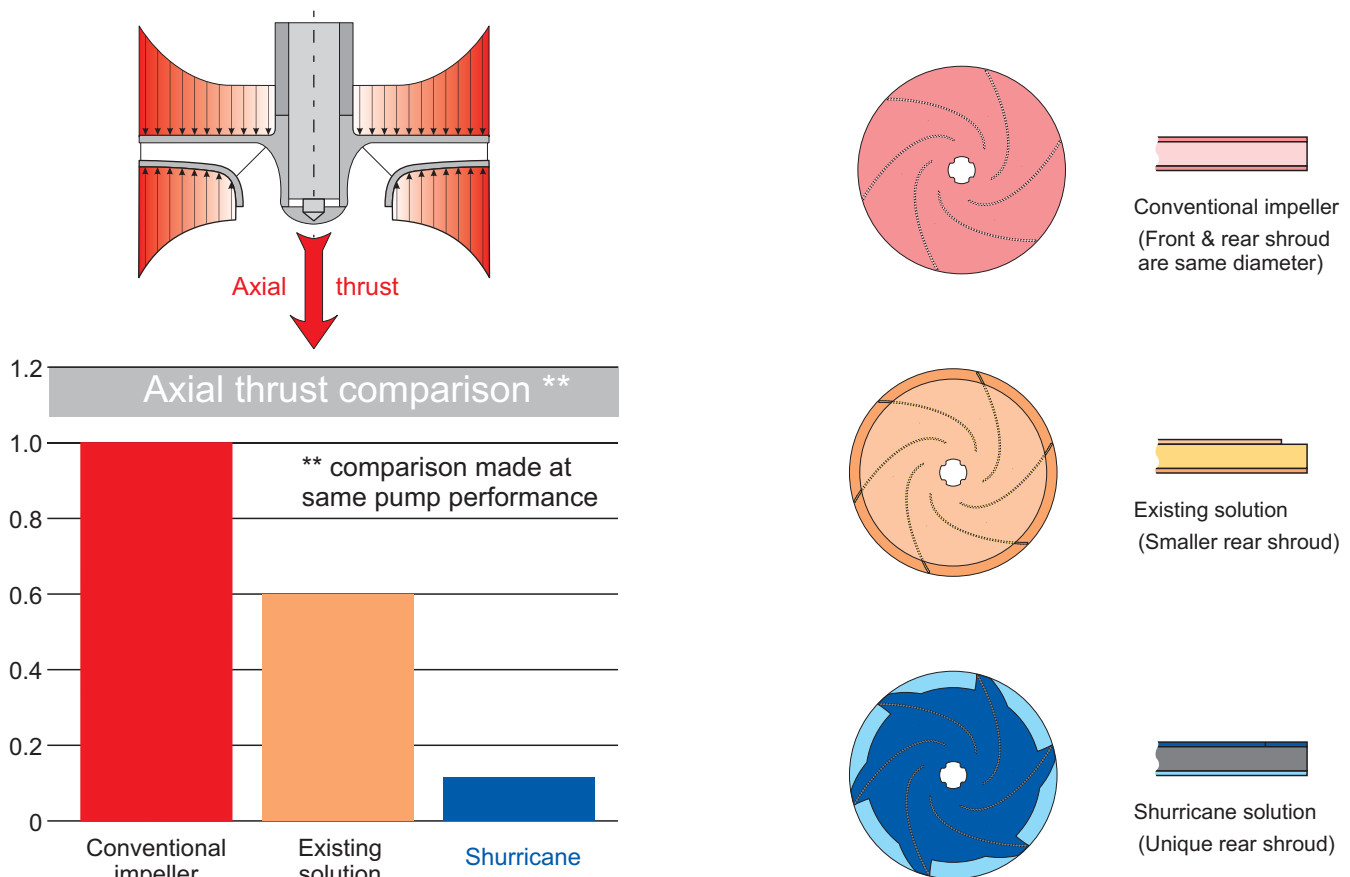
Optional connections

Another unique cutting edge solution from Ebara

The imbalance of forces acting on the front and rear shrouds of a conventional impeller results in axial thrust. This thrust load is compounding in multistage pumps, and has to be allowed for in the pump design.

For pumps with conventional impellers, the existing solutions include having a thrust bearing built in the pump, or to use a special motor fitted with a larger thrust bearing. Both are costly and can be complicated. Another solution has been to simply have a smaller diameter back shroud to reduce the thrust.

Ebara has rethought the hydraulic design used in multistage pumps. Utilising the latest in computational fluid dynamics and design, followed by rigorous testing, Ebara has developed a unique impeller design that offer solutions and value to the customer.



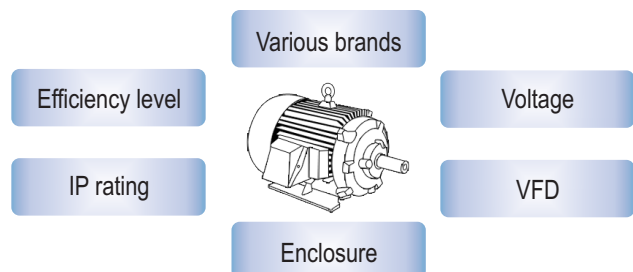
The optimised shape of the Shurrricane maintains high efficiencies and very significantly reduces the axial thrust - meaning that any standard IEC motor can be used and bearing life is improved.

Any motor - Anywhere

More choices at initial purchase.

More choices at replacement time.

Longer bearing life



Specifications subject to change without notice



EBARA PUMPS AUSTRALIA PTY. LTD.

7 Holloway Drive
Bayswater, Vic. 3153
Ph: 03 9761 3033

ACN 090 963 572
ABN 81 090 963 572

Fax: 03 9761 3044

sales@ebara.com.au

www.ebara.com.au