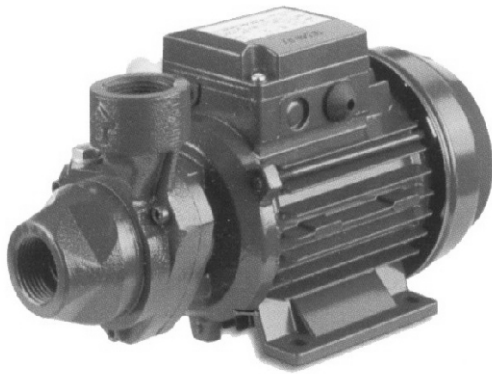
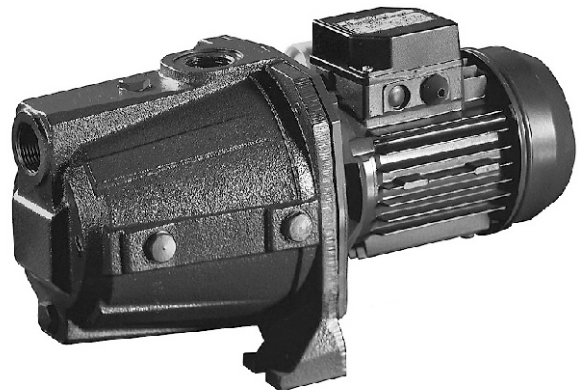




Cast Iron Pumps



Model **PRA**
Peripheral Turbine Pumps



Model **AGA/AGC**
Jet Pumps

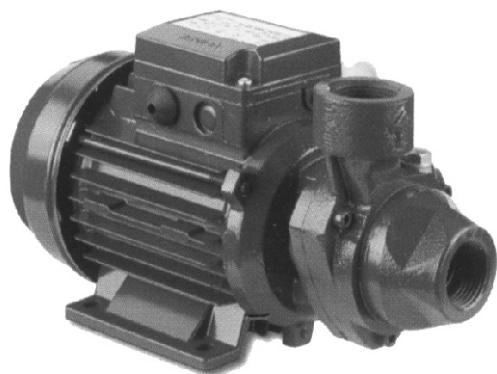


Model **CMA/B**
Single Impeller Pumps



Model **CDA**
Twin Impeller Pumps





Specifications

- Maximum working pressure : 6 bar
- Maximum liquid temperature: 80°C

Materials

- Pump casing: Cast Iron
- Impeller: Brass
- Shaft : C-10
- Bracket: Cast Iron
- Mechanical seal: Carbon/Ceramic/NBR

Technical Data

- TEFC, 2 pole motor
- Insulation class F
- IP44 protection
- 1Ø, 240 Volt, 50 Hz
- Permanent split capacitor
- Automatic thermal overload protection

Peripheral turbine pumps manufactured in cast iron. Suitable for boosting of hot or cold water.

Performance Curve

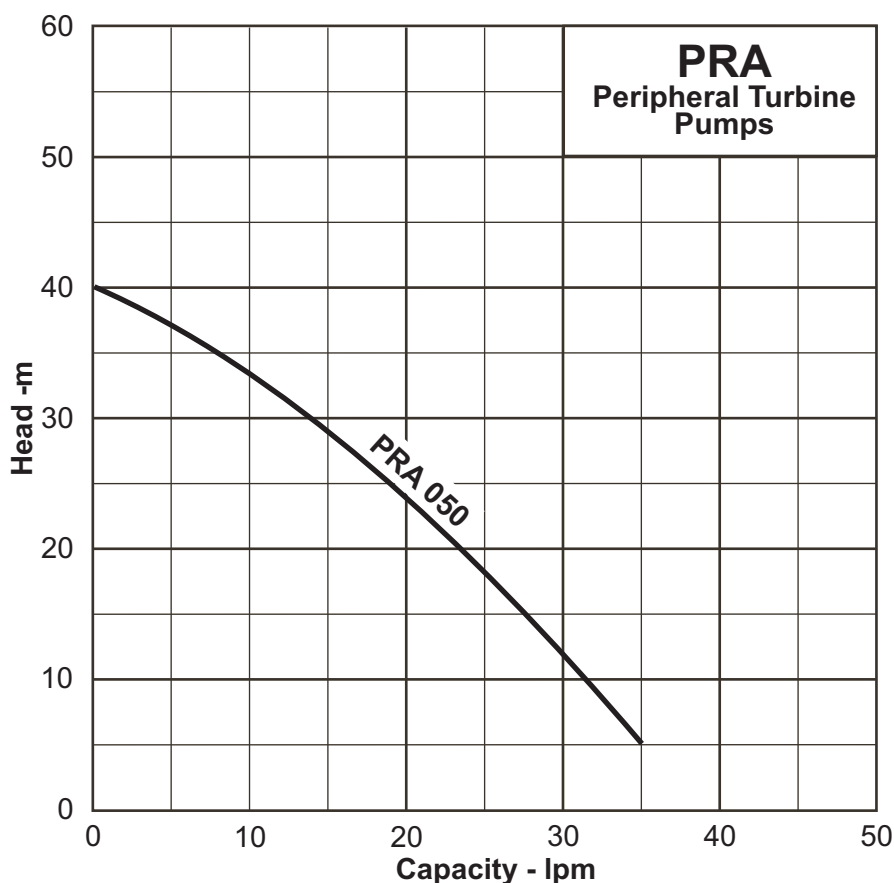
Synchronous Speed:
3000 r.p.m.

Water temp:
20°C

Applicable standard of test :
ISO 2458 Class C

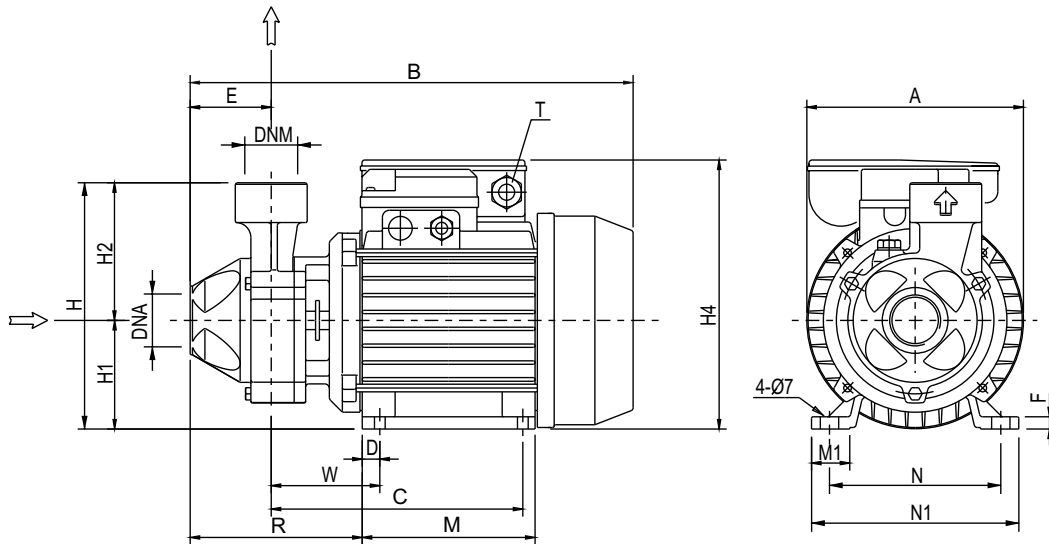
Model Code

PRA 0.50 M
 M= Single Phase
 Motor Size (HP)
 Model PRA



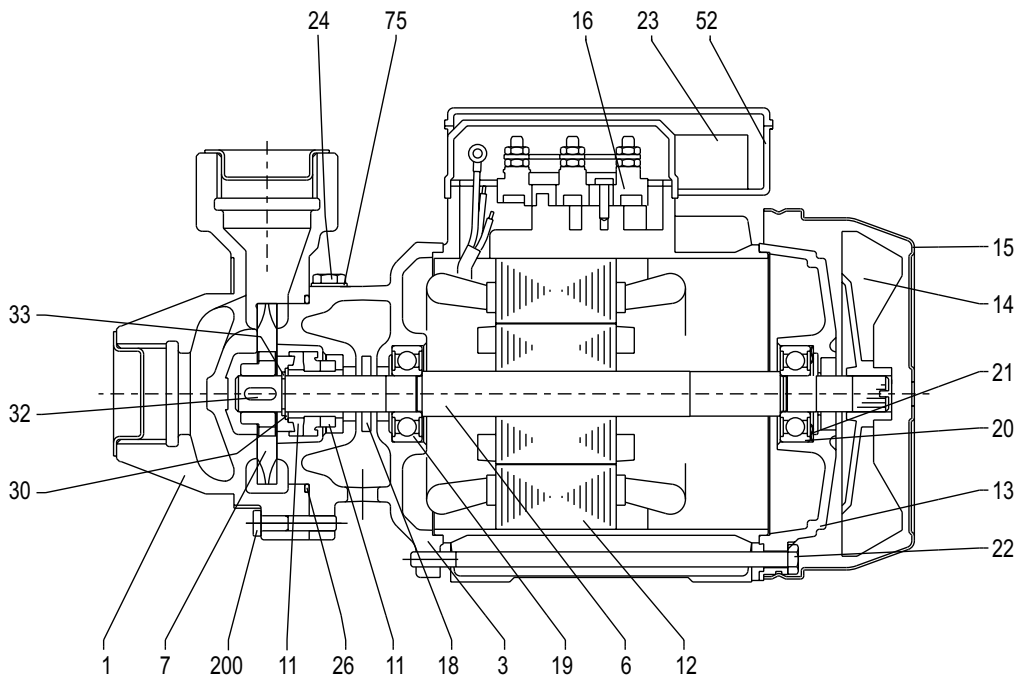
Performance Table

Pump Model	Motor Output	Power Supply	Capacitor		Full Load Current	Q= Capacity - litres/min								
			µF	Vc		5	10	15	20	35				
PRA 0.50 M	0.37 kW	240 V, 1ph.	10 µF	450 Vc	2.6 A	37	33.3	28.7	23.7	5				



	A	B	C	D	E	F	H	H1	H2	H4	M	M1	N	N1	R	T	DNA	DNM	Weight
PRA 0.50 M	130	263.5	148.5	10	50	7	143	63	80	160	100	23	100	120	118.5	PG11	1"	1"	5.6 kg

Sectional Drawing



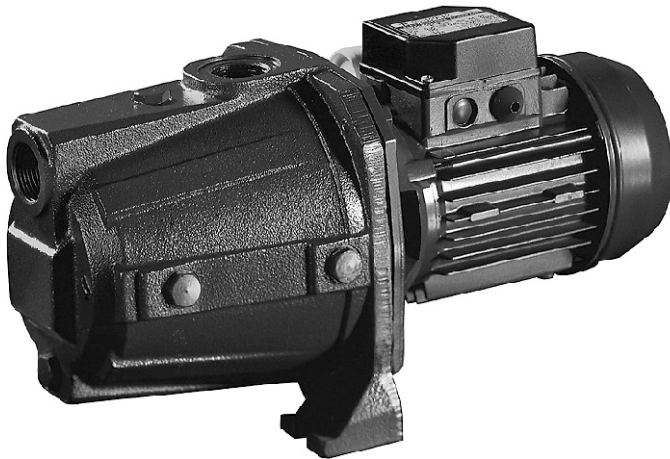
No.	Part name	Material	Qty	No.	Part name	Material	Qty	No.	Part name	Material	Qty
1	Casing	Cast Iron	1	15	Fan Cover	Fe P04 Zinced	1	24	Priming plug	Brass	1
3	Motor Bracket	Cast Iron	1	16	Terminal block	-	1	26	O-ring	NBR	1
6	Shaft with rotor	C10	1	18	Splash ring	NBR	1	30	Washer	AISI 304	1
7	Impeller	Brass	1	19	Pump side bearing	Sealed ball	1	32	Key	AISI 304	1
11	Mechanical Seal	Car/Cer/NBR	1	20	Fan side bearing	Sealed ball	1	33	Seeger ring	AISI 304	1
12	Motor frame & stator	-	1	21	Adjusting ring	Steel C70	1	52	Terminal box	Polypropylene	1
13	Motor Cover	Aluminium	1	22	Tie rod	Fe 42 Zinced	4	75	Washer	Aluminium	1
14	Fan	Polypropylene	1	23	Capacitor	-	1	200	Screw	S Steel	3

Specifications subject to change without notice



Model AGA, AGC

Cast Iron Jet Pumps



Specifications

- Maximum working pressure : 10 bar (6 Bar AGA 1.00)
- Maximum liquid temperature: 45°C

Materials

- Pump casing: Cast Iron
- Impeller: Noryl (AGA 1.00), Brass (AGA 1.50, AGC 2.00)
- Shaft : AISI 416 (AGA 1.00), AISI 303 (AGA 1.50, AGC 2.00)
- Bracket: Alum.(AGA 1.00), Cast Iron (AGA 1.50, AGC 2.00)
- Mechanical seal: Carbon/Ceramic/NBR

Technical Data

- TEFC, 2 pole motor
- Insulation class F
- IP44 protection
- 1Ø, 240 Volt, 50 Hz
- Permanent split capacitor
- Automatic thermal overload protection

Self priming jet pumps manufactured in cast iron. Suitable for boosting or transfer of water, small scale irrigation, tank & pool emptying, etc.

Performance Curve

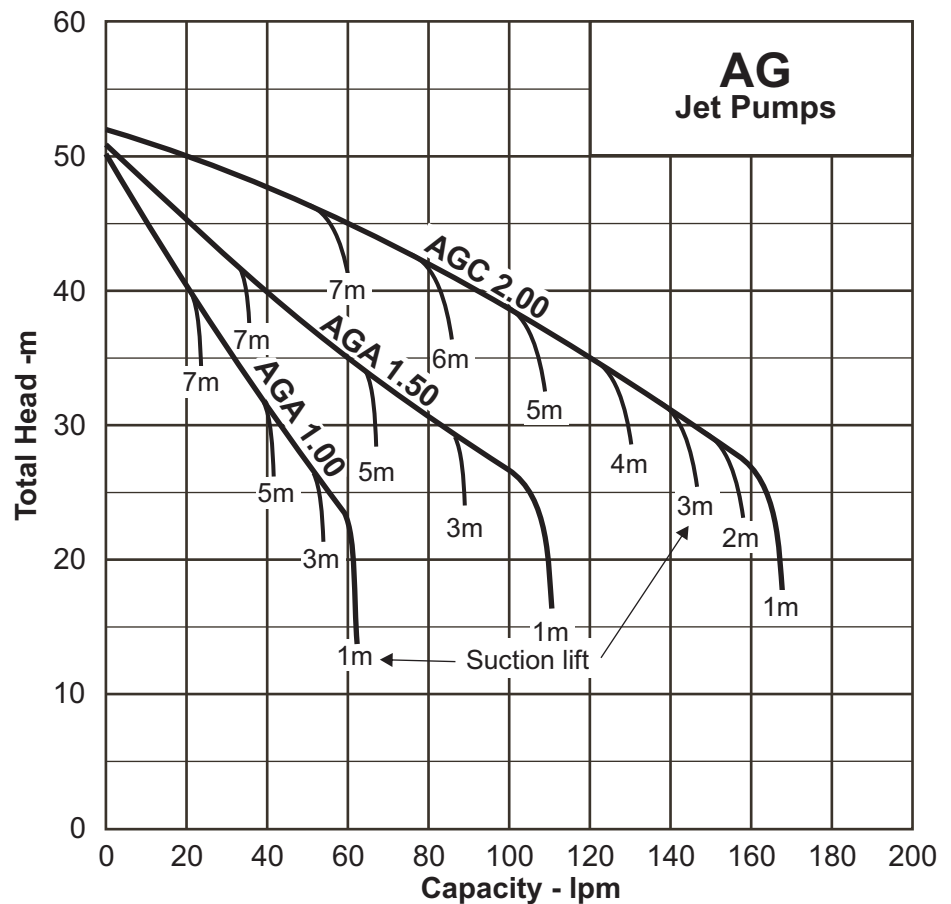
Synchronous Speed: 3000 r.p.m.

Water temp: 20°C

Applicable standard of test : ISO 2458 Class C

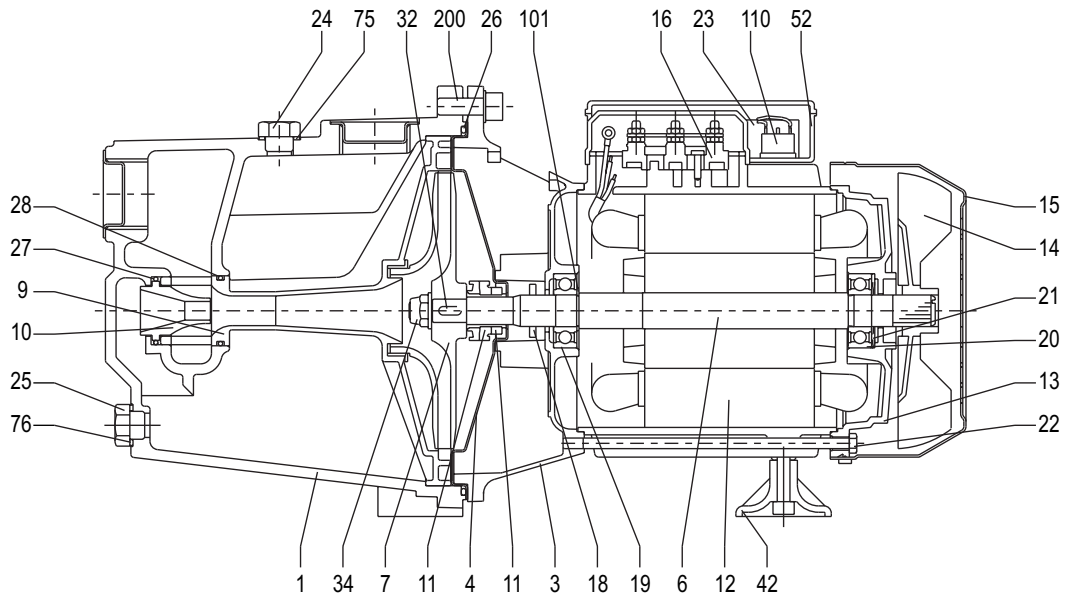
Model Code

AGA 1.50 M
 M= Single Phase
 Motor Size (HP)
 Model AGA or AGC



Performance Table

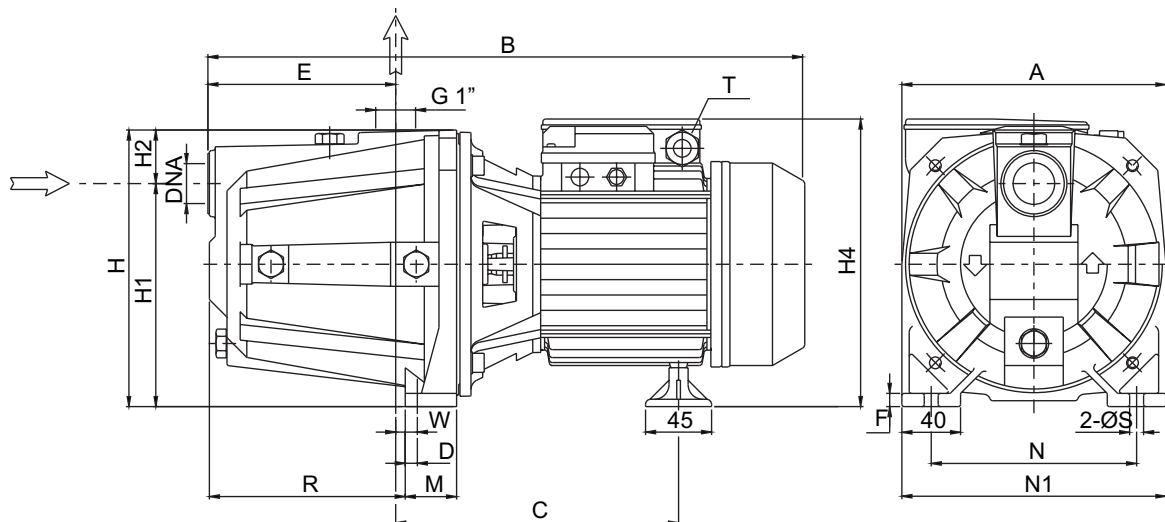
Pump Model	Motor Output	Power Supply	Capacitor		Full Load Current	Q= Capacity - litres/min												
			µF	Vc		10	20	30	40	50	60	80	100	130	160			
						H=Total Head - metres (m)												
AGA 1.00 M	0.75 kW	240 V, 1ph.	20 µF	450 Vc	5.5 A	45	40.3	35.7	31.1	27	23							
AGA 1.50 M	1.1 kW	240 V, 1ph.	35 µF	450 Vc	8.1 A	48	45.1	42.4	40.0	37.4	35.1	30.8	27.0					
AGC 2.00 M	1.5 kW	240 V, 1ph.	40 µF	450 Vc	10.5 A	51	49.9	48.8	47.3	46.3	44.9	42	38.7	33.2	27			



No.	Part name	Material		Qty	No.	Part name	Material		Qty	No.	Part name	Material		Qty
		AGA 1.00M	AGA 1.50M AGC 2.00M				AGA 1.00M	AGA 1.50M AGC 2.00M				AGA 1.00M	AGA 1.50M AGC 2.00M	
1	Casing	Cast Iron		1	15	Fan Cover	Fe P04 Zinced		1	27	O-ring	NBR		1
3	Motor Bracket	Alum.	Cast Iron	1	16	Terminal block	-		1	28	O-ring	NBR		1
4	Casing Cover	AISI 304		1	18	Splash ring	NBR		1	32	Key	AISI 304		1
6	Shaft with rotor	AISI 416	AISI 303	1	19	Pump side bearing	Sealed ball		1	34	Impeller nut	AISI 304		1
7	Impeller	Noryl	Brass	1	20	Fan side bearing	Sealed ball		1	42	Foot	PVC		1
9	Diffuser & Venturi tube	Noryl		1	21	Adjusting ring	Steel C70		1	52	Terminal box	Polypropylene		1
10	Venturi Nozzle	Noryl		1	22	Tie rod	Fe 42 Zinced		4	75	Washer	Aluminium		1
11	Mechanical Seal	Car/Cer/NBR		1	23	Capacitor	-		1	76	Washer	Aluminium		1
12	Motor frame & stator	-		1	24	Priming plug	Brass		1	101	Seeger ring	AISI 420		1
13	Motor Cover	Aluminium		1	25	Drain plug	Brass		1	110	Protector	-		1
14	Fan	Polypropylene		1	26	O-ring	NBR		1	200	Screw	S Steel		4

Dimensions

Units: mm unless otherwise specified



	A	B	C	D	E	F	H	H1	H2	H4	M	N	N1	R	T	W	S	DNA	Weight
AGA 1.00 M	180	405	195	10.3	127	9	185	152	33	199	40	140	180	128.5	PG11	11.8	9.5	1"	14 kg
AGA 1.50 M	220	495	244	10	157	10	223	170	53	247	48	180	220	167.5	PG13.5	15.5	9	1 1/2"	26 kg
AGC 2.00 M	220	508	244	10	157	10	223	170	53	247	48	180	220	167.5	PG13.5	15.5	9	1 1/2"	27 kg

Specifications subject to change without notice



Model CMA/CMB

Single Impeller Cast Iron Pumps



Specifications

- Maximum working pressure : 6 bar
- Maximum liquid temperature: 40°C (CMA), 90°C (CMB)

Materials

- Pump casing: Cast Iron
- Impeller: Noryl (CMA), Cast Iron (CMB 1.50), Brass (CMB 2.00-5.50)
- Shaft : AISI 416 (CMA), AISI 303 (CMB)
- Bracket: Aluminium (CMA, CMB 1.50), Cast Iron (CMB 2.00-5.50)
- Mechanical seal: Carbon/Ceramic/NBR

Technical Data

- TEFC, 2 pole motor
- Insulation class F
- IP44 protection
- Single phase ~ 230 Volt, 50 Hz, Permanent split capacitor
- Three phase ~230/400 Volt, 50 Hz (Dual Voltage)
- Automatic thermal overload protection

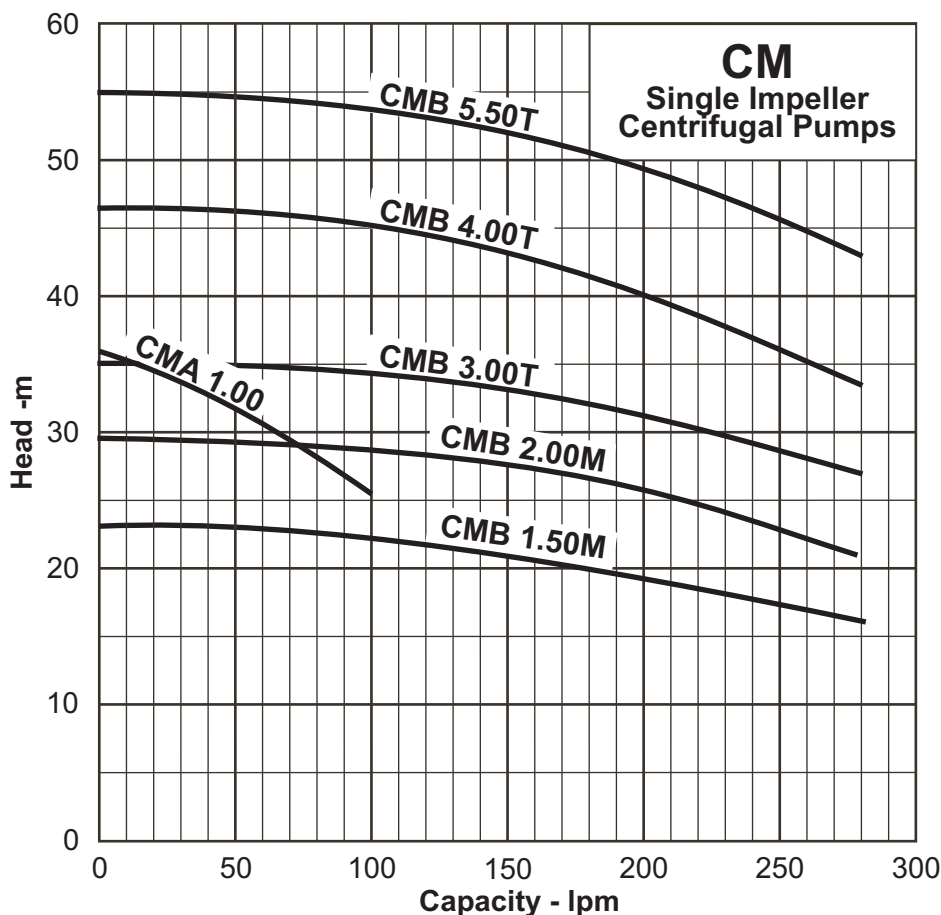
Single Impeller centrifugal pumps manufactured in cast iron. Suitable for boosting or transfer of water, small scale irrigation, etc.

Performance Curve

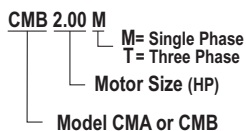
Synchronous Speed: 3000 r.p.m.

Water temp: 20°C

Applicable standard of test : ISO 2458 Class C

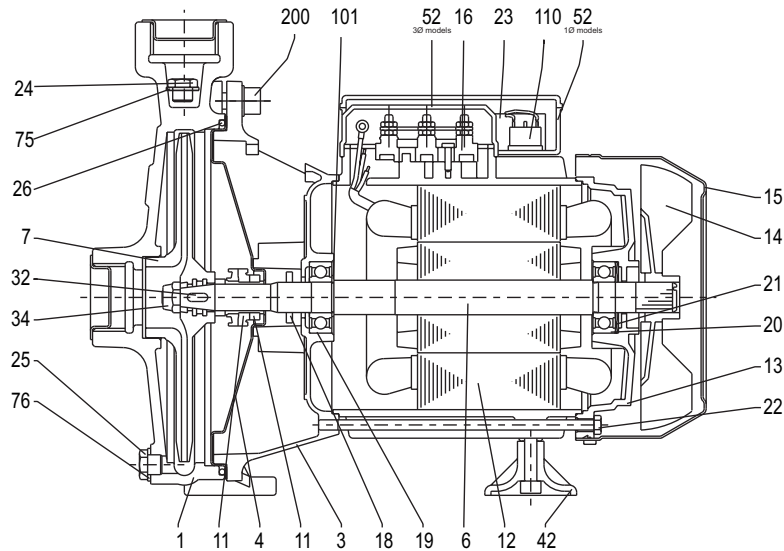


Model Code



Performance Table

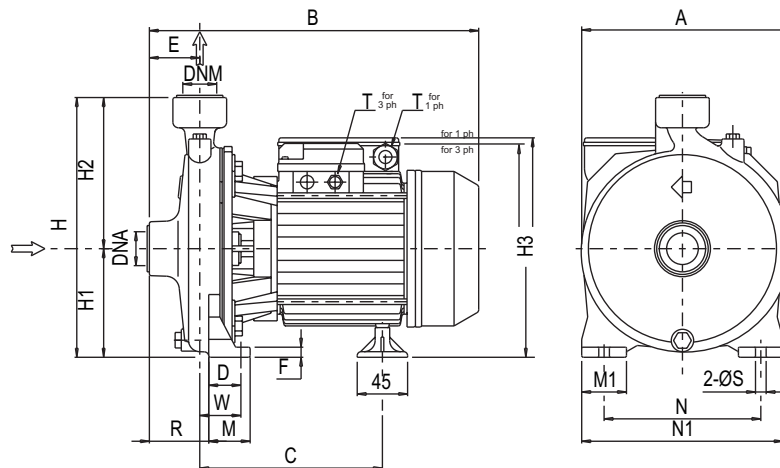
Pump Model	Motor Output	Power Supply	Capacitor μF	Vc	Full Load Current	Q= Capacity - litres/min									
						20	40	60	80	100	140	180	220	250	280
						H=Total Head - metres (m)									
CMA 1.00 M	0.75 kW	230 V Single Phase	20 μF	450 Vc	6.2 A	34.5	32.8	30.6	28.2	25.5					
CMB 1.50 M	1.1 kW		31.5 μF	450 Vc	8.5 A					22.4	21.1	19.8	18	17.1	16
CMB 2.00 M	1.5 kW		40 μF	450 Vc	10.8 A					28.7	27.7	26.3	24.5	22.8	21
CMB 3.00 T	2.2 kW	400 V Three Phase	NA	NA	4.8 A					34.5	33.7	32.1	30.3	28.8	27
CMB 4.00 T	3.0 kW		7.2 A							45	43.4	41.5	38.4	36.2	33.5
CMB 5.50 T	4.0 kW		9.4 A							54	52.3	50.4	48.1	45.7	43



No.	Part name	Material			Qty	No.	Part name	Material			Qty	No.	Part name	Material			Qty
		CMA 1.00M	CMB 1.50M	CMB other				CMA 1.00M	CMB 1.50M	CMB other				CMA 1.00M	CMB 1.50M	CMB other	
1	Casing	Cast Iron			1	16	Terminal block	-			1	32	Key	AISI 304			1
3	Motor Bracket	Alum	Cast Iron		1	18	Splash ring	NBR			1	34	Impeller nut	AISI 304			1
4	Casing Cover	AISI 304			1	19	Pump side bearing	Sealed ball			1	42	Foot	PVC			1
6	Shaft with rotor	AISI 416	AISI 303		1	20	Fan side bearing	Sealed ball			1	52	Terminal box (for 1Ø)	Polypropylene			1
7	Impeller	Noryl	Cast Iron	Brass	1	21	Adjusting ring	Steel C70			1	52	Terminal box (for 3Ø)	Aluminium			1
11	Mechanical Seal	Car/Cer/NBR			1	22	Tie rod	Fe 42 Zinced			4	75	Washer	Aluminium			1
12	Motor frame & stator	-			1	23	Capacitor (1Ø models only)	-			1	76	Washer	Aluminium			1
13	Motor Cover	Aluminium			1	24	Priming plug	Brass			1	101	Seeger ring	AISI 420			1
14	Fan	Polypropylene			1	25	Drain plug	Brass			1	110	Protector (1Ø models only)	-			1
15	Fan Cover	Fe P04 Zinced			1	26	O-ring	NBR			1	200	Screw	S Steel			4

Dimensions

Units: mm unless otherwise specified



	A	B	C	D	E	F	H	H1	H2	H3	M	M1	N	N1	R	T	W	S	DNA	DNM	Weight
CMA 1.00 M	185	300.3	171.8	36.8	45	9	232	97	135	198	45	40	140	180	45	PG11	36.8	9.5	1"	1"	12.0 kg
CMB 1.50 M	188	349.3	206.3	36.8	49.5	9	251.5	101.5	150	233.5	45	40	140	180	65.5	PG11	52.8	9.5	2"	1 1/4"	20.5 kg
CMB 2.00 M	200	373.3	209.3	36.8	57.5	9	271.5	111.5	160	243.5	45	40	160	200	76.5	PG11	55.8	9.5	2"	1 1/4"	21.5 kg
CMB 3.00 T	200	373.3	209.3	36.8	57.5	9	271.5	111.5	160	225.5	45	40	160	200	76.5	PG11	55.8	9.5	2"	1 1/4"	21.5 kg
CMB 4.00 T	247	428.8	222.3	48	60	12	323.5	133.5	190	264.5	60	50	190	240	77.5	PG16	65.5	12	2"	1 1/4"	39 kg
CMB 5.50 T	247	428.8	222.3	48	60	12	323.5	133.5	190	264.5	60	50	190	240	77.5	PG16	65.5	12	2"	1 1/4"	41 kg

Specifications subject to change without notice



Specifications

- Maximum working pressure : 10 bar (6bar for CDA 1.00)
- Maximum liquid temperature: 90°C (40°C for CDA 1.00)

Materials

- Pump casing: Cast Iron
- Impeller: Brass, (Noryl for CDA 1.00)
- Shaft : AISI 303, (AISI 416 for CDA 1.00)
- Bracket: Cast Iron, (Aluminium for CDA 1.00)
- Mechanical seal: Carbon/Ceramic/NBR

Technical Data

- TEFC, 2 pole motor
- Insulation class F
- IP44 protection
- 1Ø, 240 Volt, 50 Hz
- Permanent split capacitor
- Automatic thermal overload protection

Twin Impeller centrifugal pumps manufactured in cast iron. Suitable for boosting or transfer of water, washdown, small scale irrigation, etc.

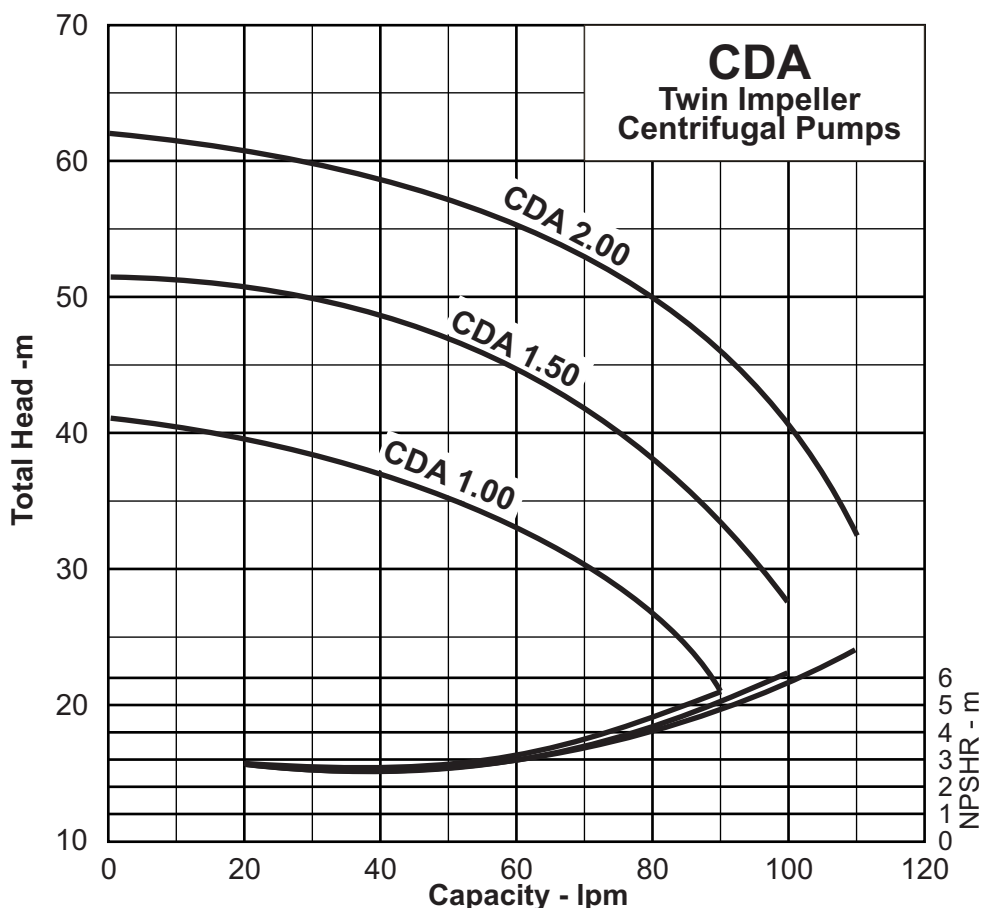
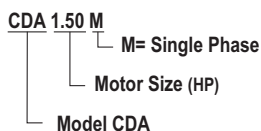
Performance Curve

Synchronous Speed: **3000 r.p.m.**

Water temp: **20°C**

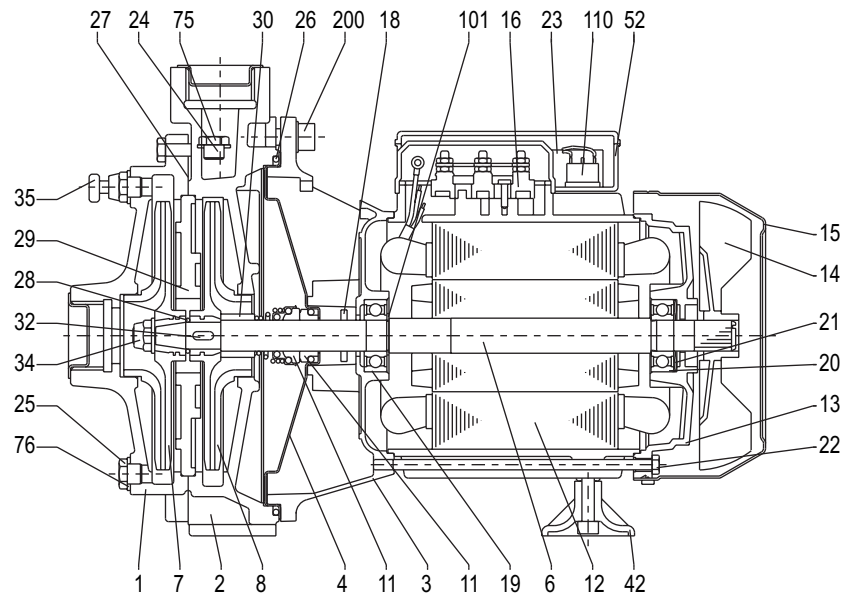
Applicable standard of test : **ISO 2458 Class C**

Model Code



Performance Table

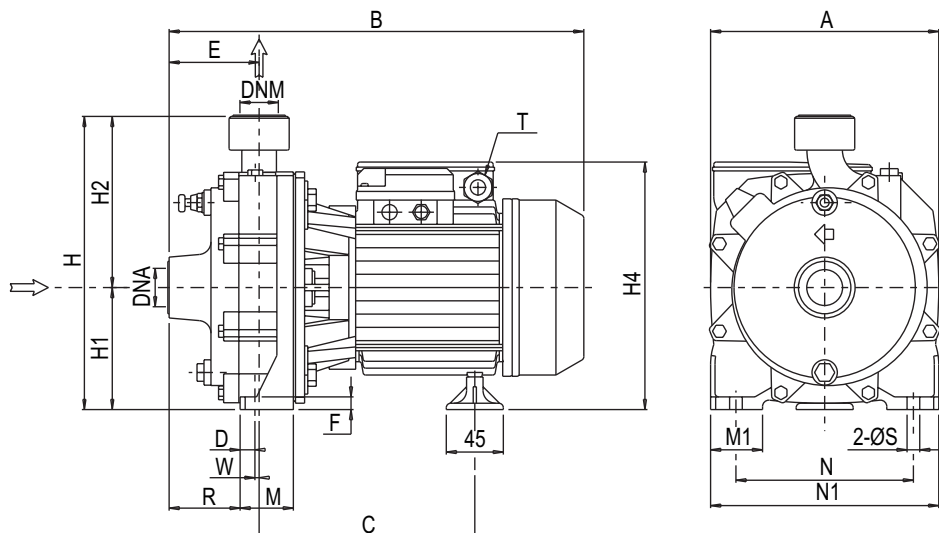
Pump Model	Motor Output	Power Supply	Capacitor		Full Load Current	Q= Capacity - litres/min									
			µF	Vc		20	40	50	80	90	100	110			
CDA 1.00 M	0.75 kW	240 V, 1ph.	20 µF	450 Vc	6.1 A	39.5	37	35.2	27						
CDA 1.50 M	1.1 kW	240 V, 1ph.	35 µF	450 Vc	8.6 A	50.8	48.8	47.1	38.4	33.4	27.5				
CDA 2.00 M	1.5 kW	240 V, 1ph.	40 µF	450 Vc	10.8 A	60.5	58.6	56.9	49.8	46.5	40.3	32.5			



No.	Part name	Material			Qty	No.	Part name	Material			Qty	No.	Part name	Material			Qty
		CDA 1.00M	CDA 1.50M	CDA 2.00M				CDA 1.00M	CDA 1.50M	CDA 2.00M				CDA 1.00M	CDA 1.50M	CDA 2.00M	
1	Casing	Cast Iron			1	16	Terminal block	-			1	29	Intermediate plate	Cast Iron			1
2	Casing	Cast Iron			1	18	Splash ring	NBR			1	30	Mech. Seal spacer	Brass			1
3	Motor Bracket	Alum	Cast Iron		1	19	Pump side bearing	Sealed ball			1	32	Key	AISI 304			1
4	Casing Cover	AISI 304	Cast Iron		1	20	Fan side bearing	Sealed ball			1	34	Impeller nut	AISI 304			1
6	Shaft with rotor	AISI 416	AISI 303		1	21	Adjusting ring	Steel C70			1	35	Air breather valve	-			1
7	Impeller	Noryl	Brass		1	22	Tie rod	Fe 42 Zinced			4	42	Foot	PVC			1
8	Impeller	Noryl	Brass		1	23	Capacitor	-			1	52	Terminal box	Polypropylene			1
11	Mechanical Seal	Car/Cer/NBR			1	24	Priming plug	Brass			1	75	Washer	Aluminium			1
12	Motor frame & stator	-			1	25	Drain plug	Brass			1	76	Washer	Aluminium			1
13	Motor Cover	Aluminium			1	26	O-ring	NBR			1	101	Seeger ring	AISI 420			1
14	Fan	Polypropylene			1	27	Gasket	Fibre			1	110	Protector	-			1
15	Fan Cover	Fe P04 Zinced			1	28	O-ring	NBR			1	200	Screw	S Steel			4

Dimensions

Units: mm unless otherwise specified



	A	B	C	D	E	F	H	H1	H2	H4	M	M1	N	N1	R	T	W	S	DNA	DNM	Weight
CDA 1.00 M	183	336.3	179.8	8.3	73	9	227	97	130	198	42	40	140	180	57.5	PG11	6.8	9.5	1"	1"	15 kg
CDA 1.50 M	209	394.8	218.3	8.3	86	9	265	110	155	242	48	40	155	195	65.5	PG13.5	12.3	9.5	1¼"	1"	25 kg
CDA 2.00 M	209	410.8	218.3	8.3	86	9	265	110	155	242	48	40	155	195	65.5	PG13.5	12.3	9.5	1¼"	1"	27 kg

Specifications subject to change without notice